

## HAVING TROUBLE W/ YOUR SOUND SYSTEM?

### CONDITION

No Sound (power LED = OFF)

Charge Indicator Not On

No Sound (power LED = ON)

Shortened Battery Life

Distorted Sound

Excessive Hum or Noise

### POSSIBLE CAUSE

- power switch is in OFF position
- batteries are fully discharged - LED may flash briefly
- confirm proper charger - replace if necessary
- no output from source
- input cable unplugged or
- input volume control is low or off
- short in external speaker cable or speaker
- total external speaker impedance < 8 ohm
- batteries are not fully charged or need to be replaced
- poor connection on input cable
- input signal too strong
- input cable not shielded

## HAVING TROUBLE W/ YOUR WIRELESS SYSTEM? (WIRELESS MODELS ONLY)

### CONDITION

No Sound (RX ON Indicator = ON)

No Sound (RX ON Indicator = OFF)

### POSSIBLE CAUSE

- wireless volume control is to low or off
- no mic plugged into belt-pack transmitter
- sound system not turned on
- transmitter power switch turned off
- low battery or no battery in transmitter
- transmitter and receiver are not on the same channel

**NEED MORE HELP? View demonstration videos on proper system setup and operation at our website - <http://www.anchoraudio.com/mgx.php>**

## ANCHOR AUDIO CUSTOMER SERVICE

# 888-444-6077

## MEGAVOX PRO TECHNICAL SPECIFICATIONS

Rated Power Output	22 watts	<b>Inputs</b>	
Max SPL @ Rated Power	126 dB @ 1 meter	Line	Hi-Z, unbalanced, 1/4" phone
Frequency Response	400 Hz - 10 kHz	Mic 1	Lo-Z, unbalanced, 1/4" phone (used for wireless on MEGA-6000U1)
Battery	12 volt rechargeable, 5.0 AH	Mic 2	Lo-Z, unbalanced, 1/4" phone
Operation Time	6 - 10 hours (dependent upon use)	<b>Outputs</b>	
Charger (RC-6000)	18V DC/universal input (100Vac - 240Vac, 50 - 63Hz)	Line	Lo-Z, 1/4" phone (post fader)
Dimensions (HWD)	13 x 9 x 14" / 33 x 23 x 36 cm	Speaker	8 ohm, unswitched, 1/4" phone
Weight	15 pounds / 6.8 Kg		

*(Specifications subject to change without notice)*



# MEGAVOX PRO

## PORTABLE PUBLIC ADDRESS SOUND SYSTEM

### OWNER'S MANUAL



## CONTENTS

GETTING STARTED .....	2
SETTING UP / CONNECTING YOUR MEGAVOX PRO SOUND SYSTEM .....	2/3
FEEDBACK / SPEAKER STAND SETUP .....	3
BASIC SYSTEM OPERATION / CARING FOR YOUR BUILT-IN BATTERIES.....	4
CARING FOR & CHARGING YOUR BUILT-IN BATTERIES .....	5
OPERATING THE BUILT-IN UHF WIRELESS RECEIVER .....	6
MEGAVOX PRO ACCESSORIES.....	6
OPERATING THE WIRELESS MICROPHONE / TRANSMITTER.....	7
HAVING TROUBLE W/ YOUR SOUND SYSTEM?.....	8
MEGAVOX PRO TECHNICAL SPECIFICATIONS .....	8



**Anchor Audio, Inc.**

Portable Sound Systems • Torrance, California

## A MESSAGE FROM THE OWNER

Thank you for choosing an Anchor Audio portable sound system. Our products incorporate state-of-the-art design and the finest quality of materials and workmanship. We're proud of our products and appreciate the confidence which you have shown by selecting an Anchor system.

I hope you'll take a few minutes to review this manual. We've incorporated several unique features into our products, and your knowledge of how to use them will enhance the performance and your enjoyment of the system.

David Jacobs, President  
on behalf of all Anchor Employees

## GETTING STARTED

Please check your new unit carefully for any damage which may have occurred during shipment. Each Anchor product is carefully inspected at the factory and packed in specially designed boxes for safe transport.

Notify the freight carrier immediately of any damage to the shipping box or product. Repack the unit in the original box and wait for inspection by the carrier's claim agent. Notify your dealer of the pending freight claim.

**NOTE: All damage claims must be made with freight carrier!**

### RETURNING SYSTEMS FOR SERVICE OR REPAIR

For service or repair, please contact the dealer you purchased your system from or Anchor Audio Customer Service at (888) 444-6077 to obtain a RA (Return Authorization) number. All shipments to Anchor Audio must include an RA number and must be shipped prepaid. C.O.D. shipments will be refused and returned at your expense.

**IMPORTANT: Save the shipping box & packing materials, they were specially designed to ship your unit!**

### WARRANTY REGISTRATION

Visit our website at [www.anchoraudio.com](http://www.anchoraudio.com) and select "Warranty Registration". Complete the online form to activate the six-year limited warranty on your MegaVox PRO sound system and two-year limited warranty for microphones.

## SETTING UP YOUR MEGAVOX PRO SOUND SYSTEM

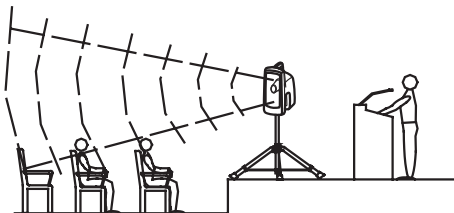
We recommend placing your sound system between the audience and the presenter, facing the audience and raised above their heads using a speaker stand or table. This benefits listeners in the rear of the crowd, minimizes the risk of overpowering those in the front and helps prevent feedback by keeping microphone users behind the sound system.

### SINGLE SYSTEM PLACEMENT

Place your unit along the least trafficked aisle pointing towards the center of the audience.

### MULTIPLE SYSTEM PLACEMENT

Place units along aisles pointing just off the audience center line, over the crowd's head. With the sound system placed properly it should provide sufficient coverage.

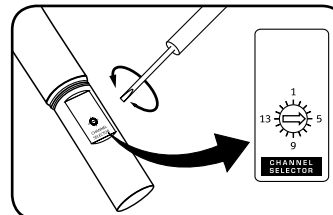


**NOTE: The Line Out jack can also be used to send the signal to a sound system in a different room or a separate recording device.**

## OPERATING THE WIRELESS MICROPHONE / TRANSMITTER

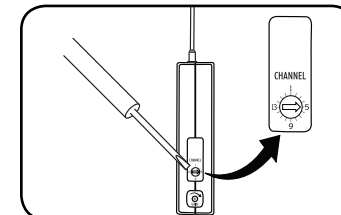
### CHANNEL SELECTION - HANDHELD TRANSMITTER

1. Unscrew battery cover on bottom of microphone
2. Set the CHANNEL SELECTOR dial to match the channel setting of your receiver
3. Replace battery cover and tighten firmly



### CHANNEL SELECTION - BODY-PACK TRANSMITTER

1. The channel selection dial is located on the side of the transmitter
2. Set the CHANNEL selection dial to match the channel setting of the receiver



**NOTE: When using dual wireless, each microphone must be set to a different channel!**

## USING YOUR WIRELESS MICROPHONES

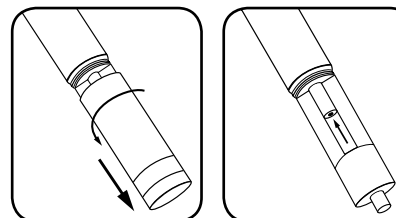
After you have set the transmitter channel (*see above*) you are ready to use your wireless microphone:

1. Body-pack transmitter users must insert the mic plug into the transmitter jack marked MIC
2. Turn the transmitter power switch to ON  
(The red LED will flash when the mic is turned on. If the red LED stays on, the battery is low)
3. Turn the MegaVox PRO power switch to ON
4. The RX indicators will light (*only one indicator will light at a time*) when the wireless signal is being transmitted and received

**CAUTION: Harmful feedback may occur when walking in front of a sound system or speaker with a wireless microphone. Always point microphone away from speakers!**

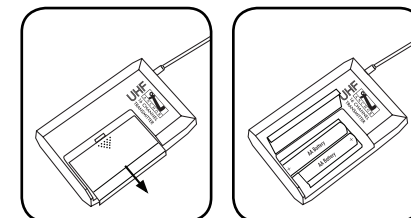
### REPLACE BATTERY - HANDHELD TRANSMITTER

1. Unscrew battery cover on bottom of microphone
2. Replace old batteries with 2 fresh size 'AA' alkaline batteries
3. Replace battery cover and tighten firmly



### REPLACE BATTERY - BODY-PACK TRANSMITTER

1. Slide open battery cover on front of transmitter
2. Replace old batteries with 2 fresh size 'AA' alkaline batteries
3. Replace battery cover by sliding firmly into place



**NOTE: Transmitter power must be OFF when changing batteries!**

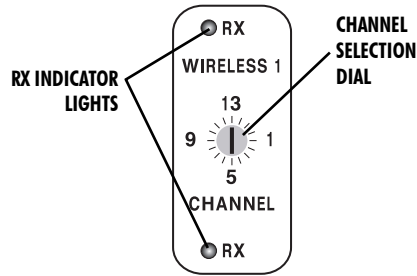
## DIVERSITY WIRELESS BY ANCHOR AUDIO

Anchor Audio UHF wireless is a 16 channel, diversity wireless system that receives signals with two independent antennae. With diversity wireless the receiver processes the stronger signal, effectively minimizing dropouts and interference from other transmitting sources. The antennae are mounted internally so there are no obstructions or risk of damage.

### CHANNEL SELECTION - BUILT-IN RECEIVER

Select a channel, set the built-in receiver & microphone transmitter to that channel before using your wireless system.

1. Choose any available wireless channel/frequency from 1 thru 16 (see page 7 for transmitter instructions)
2. Set the Wireless Channel Selector Knob to the channel/frequency you choose in step 1



If you have two wireless receivers repeat above for the second receiver. Remember each receiver/transmitter pair must be set to different channels to avoid interference.

**NOTE: Ongoing wireless interference? The frequency you selected may be in use by other systems in the area! Change channels until you find a clear frequency!**

**NEED MORE HELP? View demonstration videos on proper system setup and operation at our website - <http://www.anchoraudio.com/mgx.php>**

## MEGAVOX PRO ACCESSORIES

**MEGA-6001 - MegaVox PRO Companion Speaker**  
Unpowered companion speaker (*speaker cable not included*)

**SC-50 - Heavy Duty Speaker Cable**  
50' speaker cable, connect MEGA-6001 companion speaker

**SS-550 - Heavy Duty Speaker Stand**  
Adjustable stand made of black, anodized aluminum

**NL-MEGA - Storage Cover**  
Durable nylon fitted speaker storage/dust cover

**HC-1650M/V - Hard Case**  
For travel or storage - holds one Explorer PRO & accessories

**SOFT-TOTE - Soft Rolling Case**  
Soft case w/ wheels & handle for Explorer, stand & accessories

**MIC-90 - Handheld Wired Microphone**  
Anchor's dynamic, balanced, low impedance microphone w/ unidirectional pick-up pattern, mic "on/off" switch & 20' cable

## ANCHOR UHF WIRELESS

**WH-6000 - Handheld Microphone/Transmitter**

**WB-6000 - Body Pack Transmitter**  
Works w/ hands free microphones (mic not included)

**Body Pack Transmitter Hands Free Microphones:**

**CM-60 - Collar Microphone**  
Lightweight, low-profile mic

**EM-60T - UltraLite Microphone**  
Hands free "Over-the-Ear" mic

**LM-60 - Lapel Microphone**  
Lightweight, clip-on lapel mic

**HBM-60 - Headband Microphone**  
Ultra-lightweight headband mic

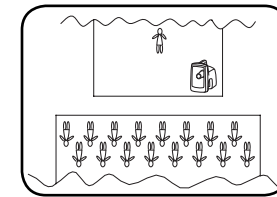
## FEEDBACK

Feedback, a howling noise or shrill sound, is self-generated by the sound system. It's caused by a microphone picking up the sound coming from the speaker and then re-amplifying it. Once a feedback loop starts it continues until the system is adjusted.

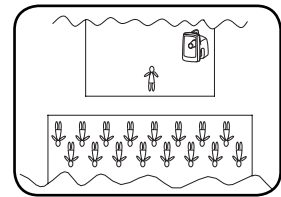
### FEEDBACK CAUSES

- Microphone too close, pointing towards or in front of speaker
- Volume setting is too loud for room
- Sound reflecting off hard surfaces

### CORRECT SYSTEM PLACEMENT



### WRONG SYSTEM PLACEMENT



### AVOIDING & ELIMINATING FEEDBACK

- Point microphone in a different direction
- Keep microphone away from the speaker
- Place speaker in FRONT of the microphone
- Reduce the sound system volume levels

**CAUTION: Feedback can damage your equipment & may be hazardous to hearing.**

## CONNECTING TWO OR MORE MEGAVOX PRO SOUND SYSTEMS

### UNPOWERED MEGAVOX PRO COMPANION SPEAKER (MEGA-6001)

Connect one end of a speaker cable (SC-50) to the SPKR OUT jack on the back of a powered MegaVox PRO sound system. The other end connects to the jack labeled IN on the back of a MegaVox PRO unpowered companion speaker.

**NOTE: AC power is not required for an unpowered companion speaker.**

### POWERED MEGAVOX PRO SOUND SYSTEMS W/ LINE OUT

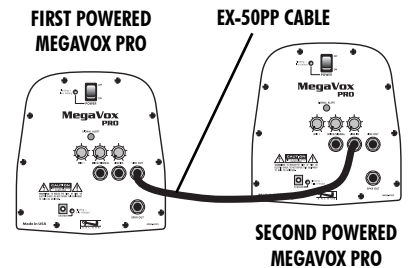
Connect speaker cable (EX-50PP) from LINE OUT on first powered MegaVox PRO to LINE IN on second powered MegaVox PRO. Set volume level of the second system to maximum, this gives full volume control to the first or primary sound system.

### DAISY-CHAINING

Use the Line Out method above to connect up to six powered MegaVox PRO PA Systems. Make all connections with power off.

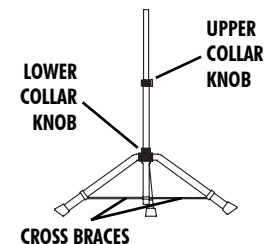
Set volume level to maximum on all secondary systems so the primary unit Level Control sets the volume for the entire chain.

To avoid speaker popping, which can cause damage, power speakers on in order, primary unit first, and power speakers off in reverse order, primary unit last.



## SPEAKER STAND SETUP

1. Loosen the Lower Collar Knob
2. Separate the stand legs until the leg support Cross Braces are parallel to the floor
3. Tighten the Lower Collar Knob



4. Loosen the Upper Collar Knob and extend the center pole
5. Adjust height and retighten the Upper Collar Knob
6. Place your Anchor sound system on the stand

## BASIC SYSTEM OPERATION

### NOTE: Fully charge batteries before first use!

1. Before turning the systems power on: Set all Input Level Controls to minimum and
2. Plug a microphone into a MIC jack and/or a line-level audio source into the LINE IN jack
3. Switch POWER to ON - The red BATTERY LED will turn on (If the light flashes or stays off charge the battery)
4. Slowly increase the Level Controls for the input jacks used to desired volume level

**NOTE: See page 6 for wireless UHF instructions.**

## CARING FOR YOUR BUILT-IN BATTERIES

It is very important that you fully charge the batteries in your new sound system before the first time its used. To preserve battery life it is also recommended that batteries be fully charged as soon as possible after every use regardless of the length of operation.

### UNDERSTANDING THE BATTERY LEVEL INDICATOR

**LED Flashing Red:** Battery charge is very low, in 15-30 minutes the Battery Protection Circuit will turn the system off.

**LED Off:** Battery is completely drained and must be charged.

**NOTE: System can be used while batteries charge!**

### OPERATING IN AC MODE

Plug your sound system into an AC outlet. Operate as normal while charging the built-in batteries at the same time. The Charger LED will light during charging and flash when the battery is fully charged.

### BATTERY SERVICE TIME

With the batteries fully charged you can expect approx.:

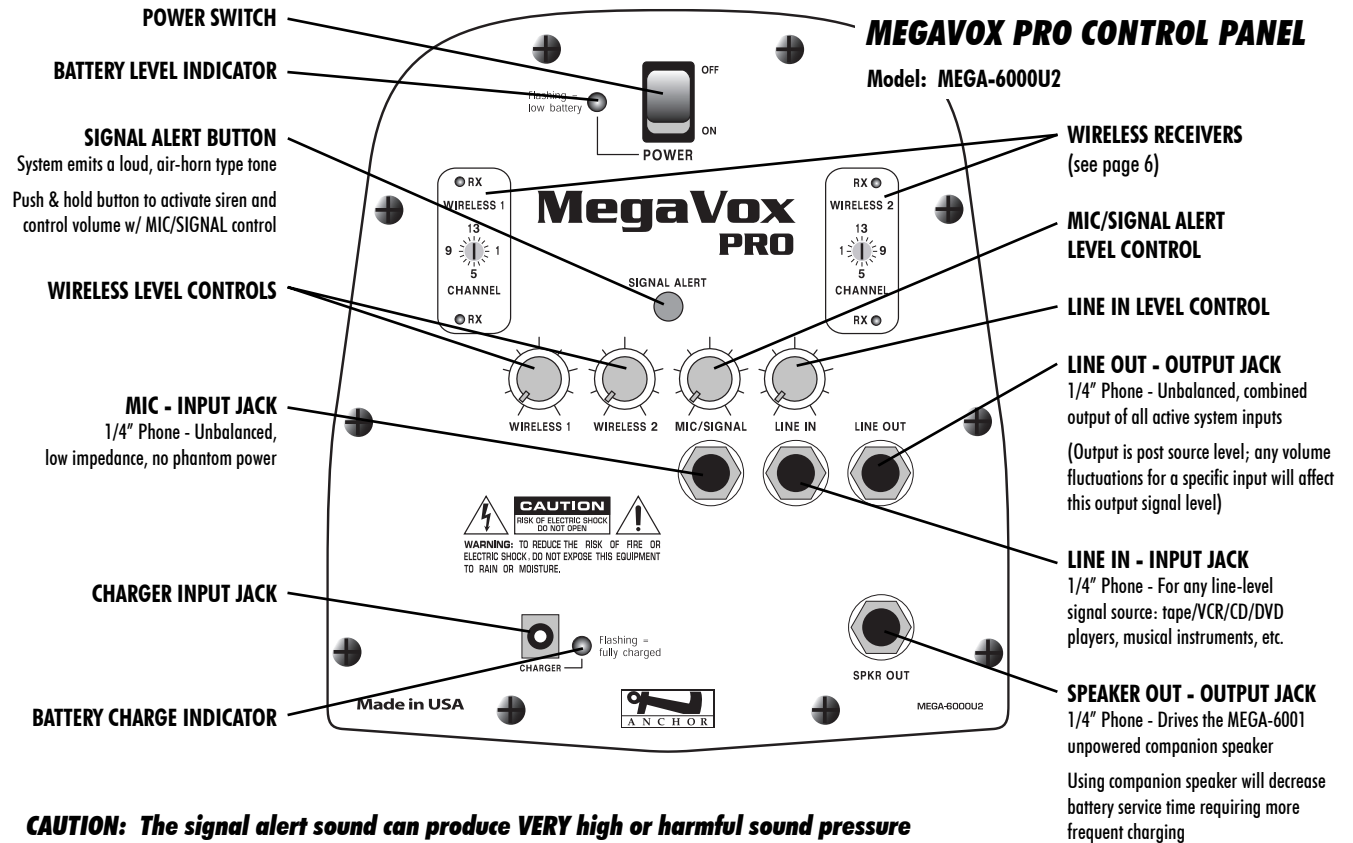
8-12 hrs @ Medium Volume      3-6 hrs @ Full Volume

Of continuous music input (longer for speech). Service time will vary depending on control settings and use of accessories (built-in wireless receivers and/or a companion speaker).

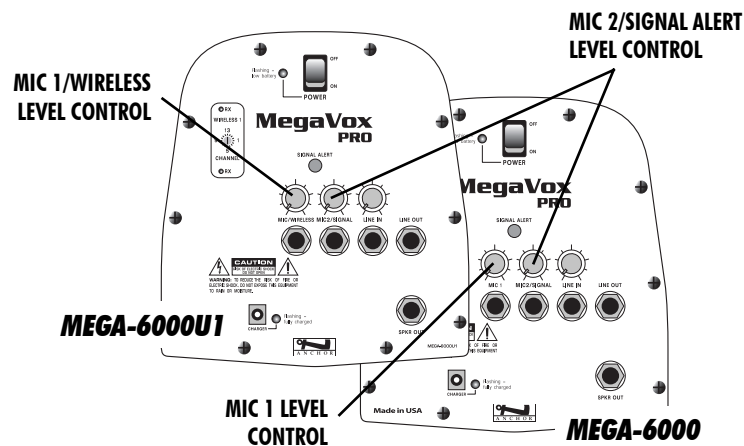
**IMPORTANT: For longer battery life always store your system w/ batteries fully charged!**

### SYSTEM STORAGE & BATTERIES

Always store your sound system with the batteries fully charged. For extended periods of storage leave the system plugged into an AC outlet. If this is not possible, charge the system at least once each month for a minimum of 24 hours.



**CAUTION: The signal alert sound can produce VERY high or harmful sound pressure levels that can cause hearing damage.**



**NOTE: All in/out line connections must be made w/ shielded cable to avoid hum, buzzing, or radio interference.**

## CHARGING YOUR BUILT-IN BATTERIES

An automatic charging system is built-in to your MegaVox PRO Sound System. It is designed to properly charge and maintain the systems built-in batteries. To charge batteries:

1. Plug the power cord into your sound system
2. Plug the other end of the cord into AC outlet - Charger LED will stay on during charging
3. Batteries fully charge in approx. 6-8 hrs - Charger LED will flash

When in AC mode the system automatically transfers power from the battery charger to the power amplifier at high volume output, causing the Charger LED to flicker.