

GETTING STARTED

Please check your new unit carefully for any damage which may have occurred during shipment. Each Anchor product is carefully inspected at the factory and packed in specially designed boxes for safe transport.

Notify the freight carrier immediately of any damage to the shipping box or product. Repack the unit in the original box and wait for inspection by the carrier's claim agent. Notify your dealer of the pending freight claim.

NOTE: All damage claims must be made with freight carrier!

RETURNING SYSTEMS FOR SERVICE OR REPAIR

For service or repair, please contact the dealer you purchased your system from or Anchor Audio Customer Service at (888) 444-6077 to obtain a RA (Return Authorization) number. All shipments to Anchor Audio must include an RA number and must be shipped prepaid. C.O.D. shipments will be refused and returned at your expense.

**IMPORTANT: Save the shipping box & packing materials.
They were specially designed to ship your unit.**

WARRANTY REGISTRATION

Visit our website at www.anchoraudio.com and select "Warranty Registration". Complete the online form to activate the two-year limited warranty on your CouncilMAN Conference system.

COUNCILMAN TECHNICAL SPECIFICATIONS

AN-100CM Console Speaker

| | | | |
|-----------------------|--|--------------------|-----------------------------------|
| Rated Power Output | 30 watts | Line In | 3.5mm |
| Max SPL @ Rated Power | 106 dB @ 1 meter | Line Out | Lo-Z, buffered, XLR and 1/4" |
| Frequency Response | 65 Hz - 18 kHz ± 3 dB | Balanced | |
| Speaker Type | 4.5" woofer, 10 mm dome tweeter Magnetically Shielded | Line Output Level | -20 dBV (100 mVrms) |
| AC Power Reqs. | 100 - 240 VAC, 50/60 Hz | Enclosure Material | ABS Plastic |
| Fuse Rating | T 1.0A / 250V (internally mounted) | Dimensions (HWD) | 5.25 x 8.4 x 9" / 13 x 21 x 23 cm |
| Export Model | T 0.5A / 250V (internally mounted) | Weight | 8.5 lbs / 3.8 Kg |
| | | Warranty | 6 years |

CHM-100/DEL-100 Microphone Base

| | |
|--------------------|--|
| Power Requirement | +22 VDC @ 60 mA from pin 2 of daisy chain |
| Output Impedance | >10k ohms |
| Phantom Power | 18V |
| Dimensions (HWD) | 5.8 x 6.5 x 1.75" / 14.73 x 16.51 x 4.45 cm |
| Weight | 0.90 lbs / .41 Kg |
| Daisy Chain In/Out | Male and Female 3 pin XLR |
| CHM-100 Controls | Push to Talk, Volume and Mute |
| DEL-100 Controls | Push to Talk and Volume |
| Warranty | 2 years |

GM-100 Gooseneck Microphone

| | |
|-----------------|--|
| Pickup Pattern | Cardioid |
| Type | Back Electret Condenser |
| Phantom Power | 9 - 52 Volts DC |
| Impedance | 200 Ohms @ 1kHz |
| Response | 80 Hz - 17 kHz ±3dB |
| Sensitivity | -56 dB @ 1 kHz open circuit (0 dB = 1 V/ubar) |
| Dimension | 18.75" from mic tip to XLR top, |
| 2 flex sections | |
| Microphone | 0.54" O.D. |
| Warranty | 2 years |

(Features and specifications subject to change without notice)



**For Setup & Operation Videos Go To:
www.anchoraudio.com**

CouncilMAN CONFERENCE SYSTEM

OWNER'S MANUAL



A MESSAGE FROM THE OWNER

Thank you for choosing an Anchor Audio Conference system. Our products incorporate state-of-the-art design and the finest quality of materials and workmanship. We're proud of our products and appreciate the confidence which you have shown by selecting an Anchor system. I hope you'll take a few minutes to review this manual. We've incorporated several unique features into our products, and your knowledge of how to use them will enhance the performance and your enjoyment of the system.

Janet Jacobs - President
on behalf of all Anchor Employees

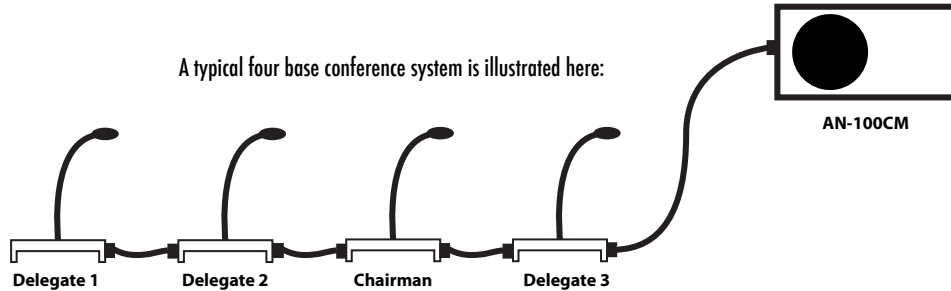
888/444-6077 • 310/784-2300

What is CouncilMAN?

CouncilMAN is a wired conference system that's simple to set up and easy to use. The main system components include:

CHM-100 Chairman base, DEL-100 Delegate bases, gooseneck microphones and AN-100CM speaker/power console

Station to station connection is made using standard microphone cable with 3-pin XLR connectors. The AN-100CM provides power to each microphone base. Up to 10 microphone bases can be used with the AN-100CM.



Basic System Operation

Place a microphone into each base.

Daisy-chain all the microphone bases and the AN-100CM powered speaker. The speaker must be near a power outlet - plug in the AC cord.

Set the AN-100CM power switch to ON and volume knob to 12 o'clock.

Push the microphone base MIC ON/OFF buttons once to talk, press again to turn off. When a microphone is live, its talk switch will be illuminated.

Adjust the microphone so it is near the mouth.

Set volume controls on each base.

When the conference system is powered up, all microphones wake up in the OFF condition.

* Any standard XLR 3-conductor mic cable can be used.

AN-100CM Powered Speaker

The AN-100CM can power up to ten chairman and delegate microphones. The AN-100CM can be connected to either end of the daisy chain. When connected at an end, only one of the AN-100CM's XLR connectors will be occupied.

The AN-100CM also includes a 3.5mm standard Line In allowing audio from other sources to be played through the system. A 1/4" Line Out is provided for connection to a recorder or other device. The power switch, volume control knob and all input and output connectors are on the control panel on the rear of the speaker. The balanced XLR Line Out can be used to connect another Anchor system for larger crowd coverage or to the house system.

CHM-100 and DEL-100 Microphone Bases

The microphone bases have a 3-pin XLR Input Jack and a 3-pin XLR Output Jack. Daisy chain the microphones in any order with the AN-100CM using the EX-4M (4 foot mic cable) or EX-25M (25 foot mic cable). Each base has a 3-pin XLR Female electret microphone jack

CHM-100 Chairman Controls:

MIC ON/OFF - push once to Talk and push again to mute, LED lit when mic is live

Rotary Volume - adjustable volume for each user's voice level

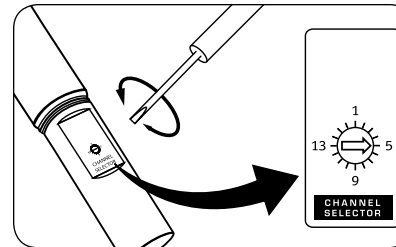
Mute Others - press for several seconds to Mute All delegates in the conference system or the wireless module

DEL-100 Delegate Controls:

MIC ON/OFF - push once to Talk and push again to mute, LED lit when mic is live. If the Chairman mutes all, the Talk/On/Off button must be pressed to have the mic go live

Rotary Volume - adjustable volume for each user's voice level

OPERATING THE WIRELESS MIC WITH AN-100CMU1



CHANNEL SELECTION - HANDHELD TRANSMITTER

1. Unscrew battery cover on bottom of microphone
2. Set the CHANNEL SELECTOR dial to match the channel setting of your receiver on the AN-100CMU1
3. Replace the battery cover
4. Adjust volume on AN-100CMU1 and begin speaking

Need more help? View demonstration videos on proper system setup and operation at our web site: www.anchoraudio.com

ACCESSORIES

SS-250 Speaker Stand

SB-1BK Stand Mount

SB-3BW Ceiling Mount Bracket - white

SB-360W 360° Swivel Wall Bracket - white

ALB-40 Assistive Listening Package

Note: Custom length microphone cables are available from Anchor Audio



Anchor Audio, Inc.

Portable Sound Systems • Torrance, California